


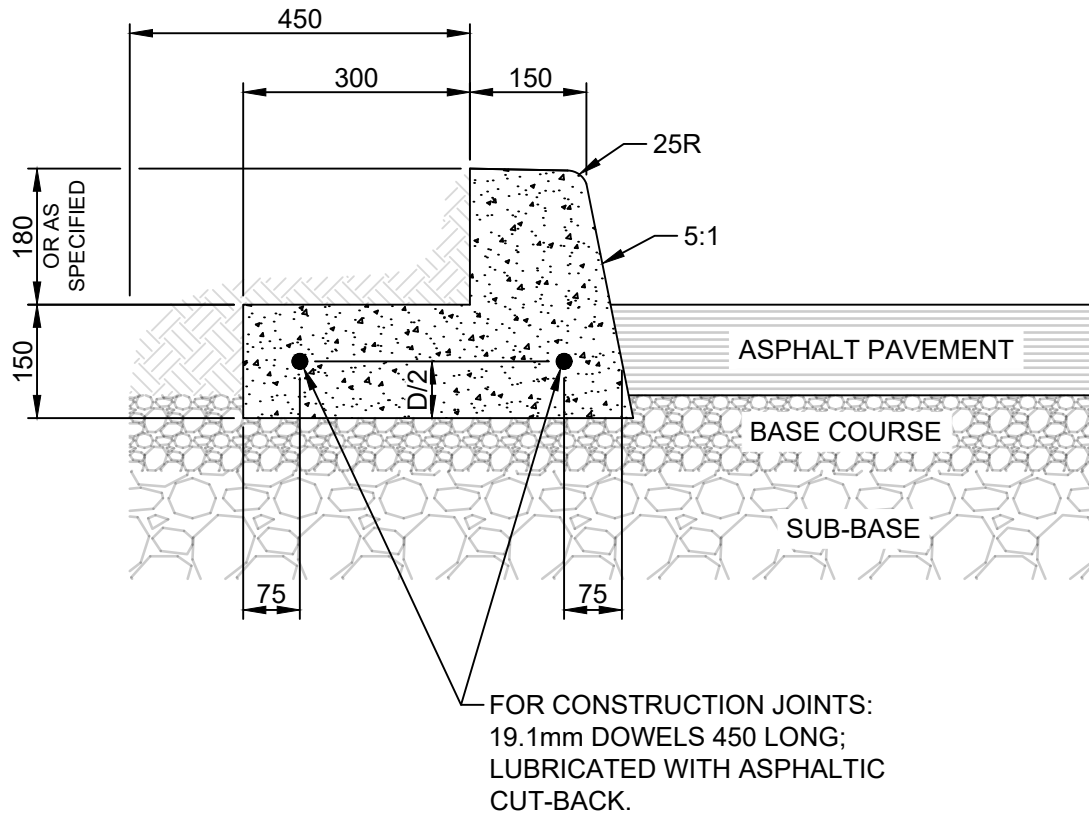
Appendix B: Standard Detail Drawings

Drawing #:	Drawing Name
SD-200	Curb and Gutter
SD-200A	Barrier Curb for Asphalt Pavement
SD-200B	Barrier Curb and Reversed Gutter for Asphalt Pavement
SD-202D	75mm Lip Curb for Asphalt Pavement
SD-202F	Lip Curb with Integral Approach or Asphalt Pavement
SD-203C	Modified Barrier Curb for Asphalt Pavement
SD-203D	Modified Barrier Curb with Reversed Gutter for Asphalt Pavement
SD-220E	Barrier Curb and Gutter Inlet Isolation Detail for New Asphalt Pavements
SD-221	Curb Inlet with Catch Basin in Pavement
SD-222	Curb Inlet with Catch Basin in Boulevard
SD-228A	Concrete Sidewalk
SD-228D	Sidewalk Expansion Joints
SD-229F	Curb Ramp for Asphalt Pavements
SD-235	Residential Approach – Concrete
SD-240A	Interlocking Paving Stone Detail for Residential Approaches
SD-240B	Interlocking Paving Stones on Lean Concrete Base (Non Driving Surface)
SD-245	Subdrain Installation Detail
SI-17	Typical Speed Humps and Speed Table Details



3. THIS DETAIL SHALL ONLY BE USED FOR REPAIRS OF EXISTING CURB AND GUTTER OR AS DIRECTED BY THE CONTRACT ADMINISTRATOR.

 <div> <div>THE CITY OF WINNIPEG</div> <div>PUBLIC WORKS DEPARTMENT</div> </div>	Revisions			
	1.	OCT 24	ADDED NOTE 3	R.B.
Reference Spec. No. CW 3325	No.	Date	Description	By
CURB AND GUTTER	Designed By: B.P.		Drawn By: R.B.	Scale : N.T.S.
	Checked By: D.R.K.		Date: 2008-12-15	Drawing No.
	Approved: PAVEMENT MANAGEMENT BRANCH			SD-200



NOTES:

1. TRANSVERSE SAW CUT EVERY 3m OR AT PAVEMENT JOINTS
2. TRANSVERSE SAW CUTS ARE TO BE A MAXIMUM DEPTH OF 25mm
3. FACE OF CURB SHALL BE SEALED IN ACCORDANCE WITH CW 3250

DIMENSIONS IN MILLIMETRES



THE CITY OF WINNIPEG
PUBLIC WORKS DEPARTMENT

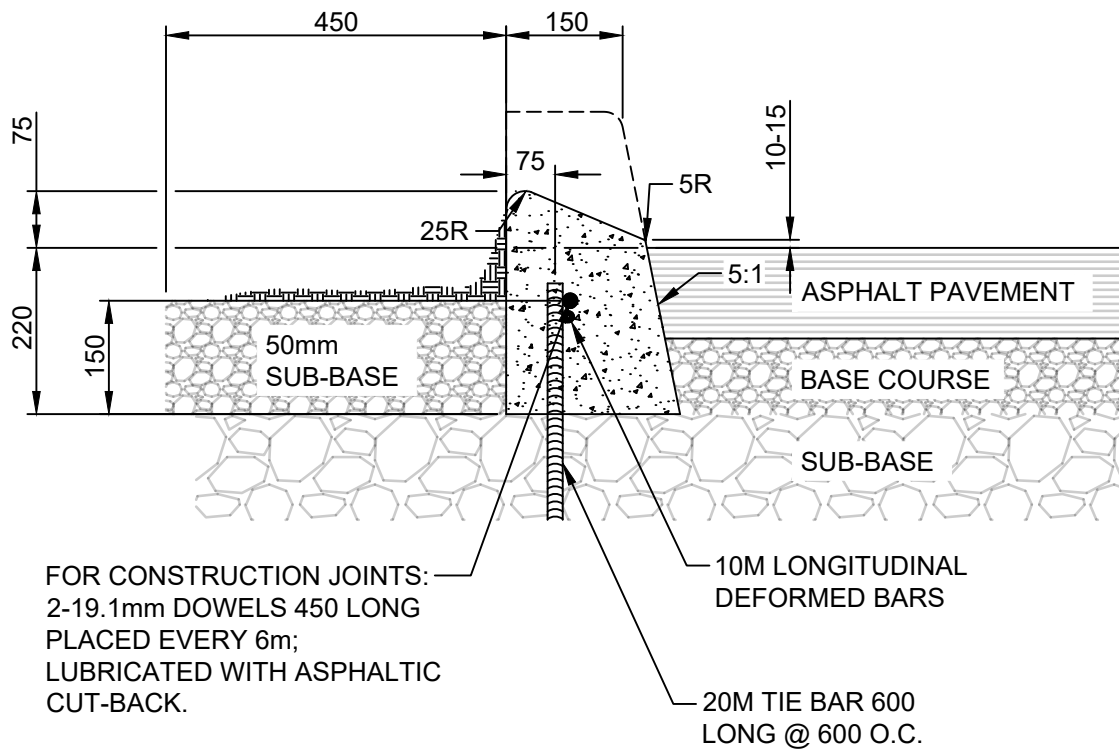
Reference Spec. No.
CW 3325

Revisions

No.	Date	Description	By

**BARRIER CURB AND
REVERSED GUTTER FOR
ASPHALT PAVEMENT**

Designed By: A.G.	Drawn By: T.K.	Scale : N.T.S
Checked By: B.K.	Date: 2025-12-15	Drawing No.
Approved: PAVEMENT MANAGEMENT BRANCH		SD-200B



NOTES:

1. TRANSVERSE SAW CUT EVERY 3m OR AT PAVEMENT JOINTS
2. TRANSVERSE SAW CUTS ARE TO BE A MAXIMUM DEPTH OF 25mm
3. FACE OF CURB SHALL BE SEALED IN ACCORDANCE WITH CW 3250

DIMENSIONS IN MILLIMETRES



THE CITY OF WINNIPEG
PUBLIC WORKS DEPARTMENT

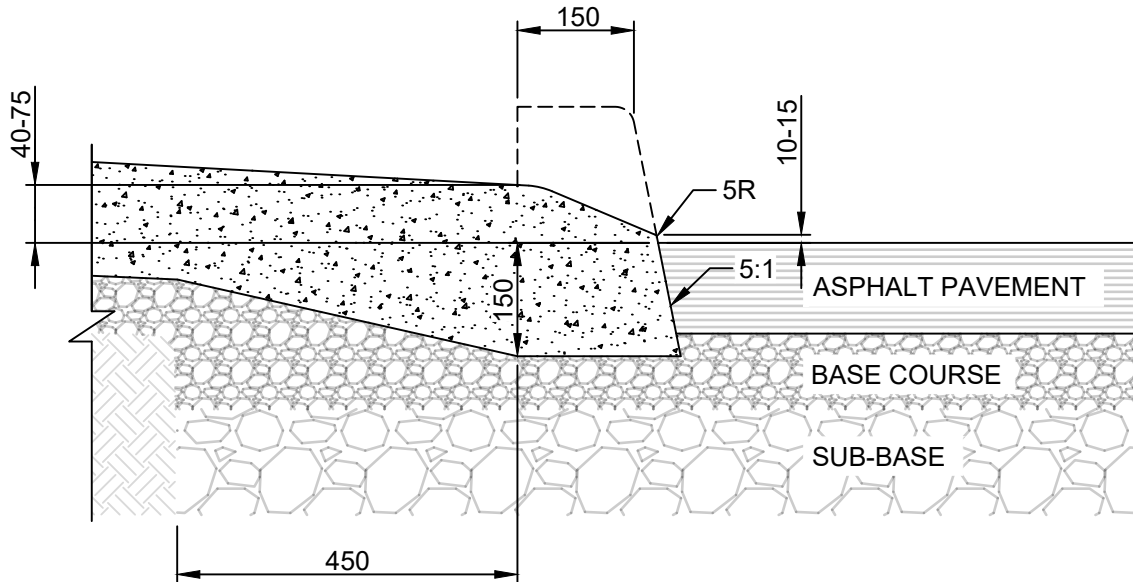
Reference Spec. No.
CW 3325

Revisions

No.	Date	Description	By

75 mm LIP CURB FOR
ASPHALT PAVEMENT

Designed By: A.G.	Drawn By: R.B.	Scale : N.T.S
Checked By: B.K.	Date: 2025-12-15	Drawing No.
Approved: PAVEMENT MANAGEMENT BRANCH		SD-202D



NOTES:

1. TRANSVERSE SAW CUT EVERY 3m OR AT PAVEMENT JOINTS
2. TRANSVERSE SAW CUTS ARE TO BE A MAXIMUM DEPTH OF 25mm
3. FOR CONSTRUCTION JOINTS INSTALL TWO 19.1mm DOWELS 450 LONG; LUBRICATED WITH ASPHALTIC CUT-BACK. REF SD-200B.
4. FACE OF CURB SHALL BE SEALED IN ACCORDANCE WITH CW 3250

DIMENSIONS IN MILLIMETRES



THE CITY OF WINNIPEG
PUBLIC WORKS DEPARTMENT

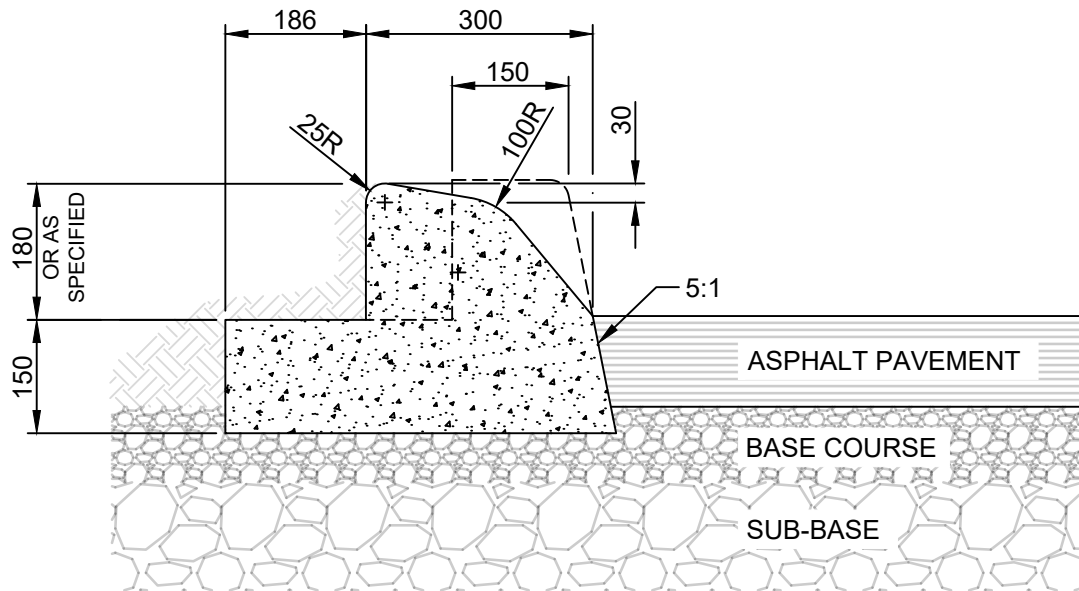
Reference Spec. No.
CW 3325

Revisions

No.	Date	Description	By

LIP CURB WITH
INTEGRAL APPROACH
FOR ASPHALT PAVEMENT

Designed By: A.G.	Drawn By: T.K.	Scale : N.T.S
Checked By: B.K.	Date: 2025-12-15	Drawing No.
Approved: PAVEMENT MANAGEMENT BRANCH		SD-202F



NOTES:

1. TRANSVERSE SAW CUT EVERY 3m OR AT PAVEMENT JOINTS
2. TRANSVERSE SAW CUTS ARE TO BE A MAXIMUM DEPTH OF 25mm
3. FOR CONSTRUCTION JOINTS INSTALL TWO 19.1mm DOWELS 450 LONG;
LUBRICATED WITH ASPHALTIC CUT-BACK. REF SD-200B.
4. FACE OF CURB SHALL BE SEALED IN ACCORDANCE WITH CW 3250

DIMENSIONS IN MILLIMETRES



THE CITY OF WINNIPEG
PUBLIC WORKS DEPARTMENT

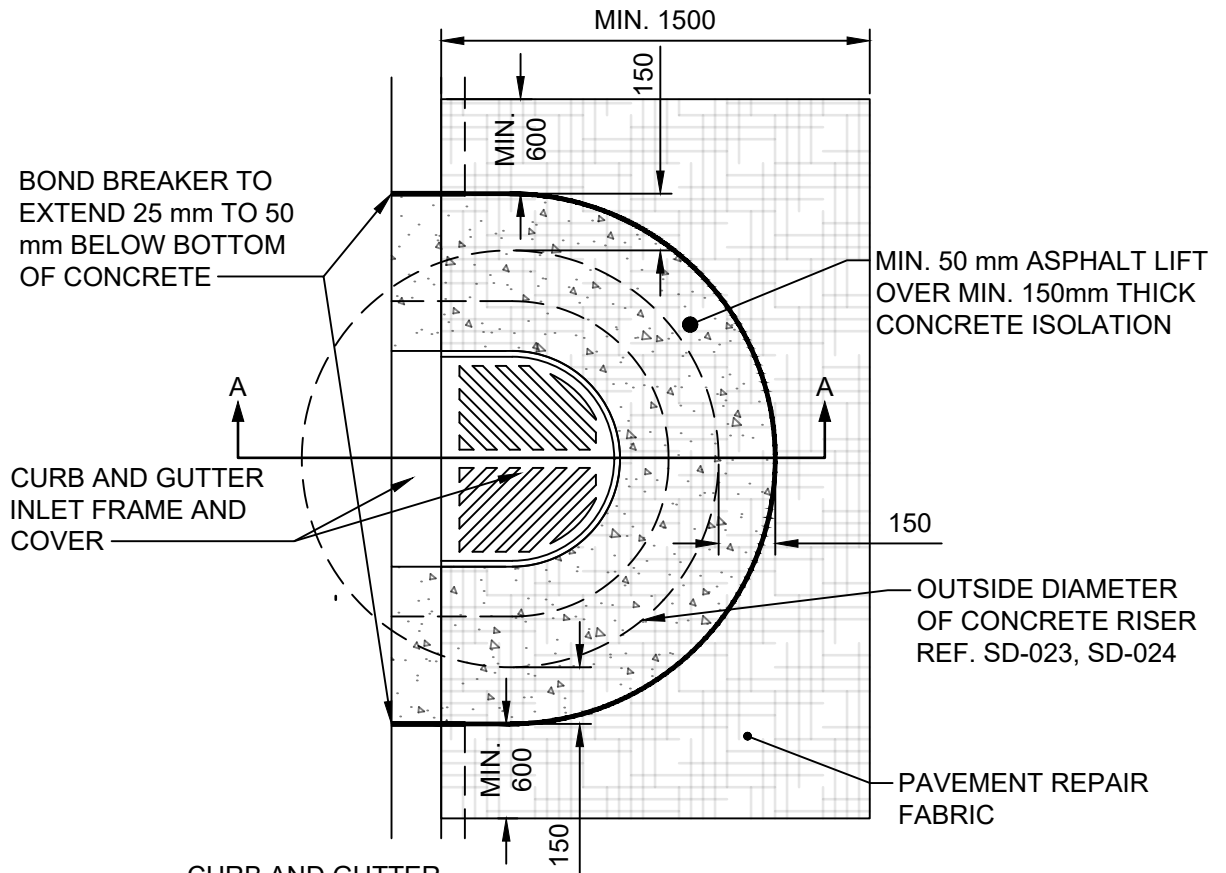
Reference Spec. No.
CW 3325

Revisions

No.	Date	Description	By

**MODIFIED BARRIER CURB
WITH REVERSED GUTTER
FOR ASPHALT PAVEMENT**

Designed By: A.G.	Drawn By: T.K.	Scale : N.T.S
Checked By: B.K.	Date: 2025-12-15	Drawing No. SD-203D
Approved: PAVEMENT MANAGEMENT BRANCH		

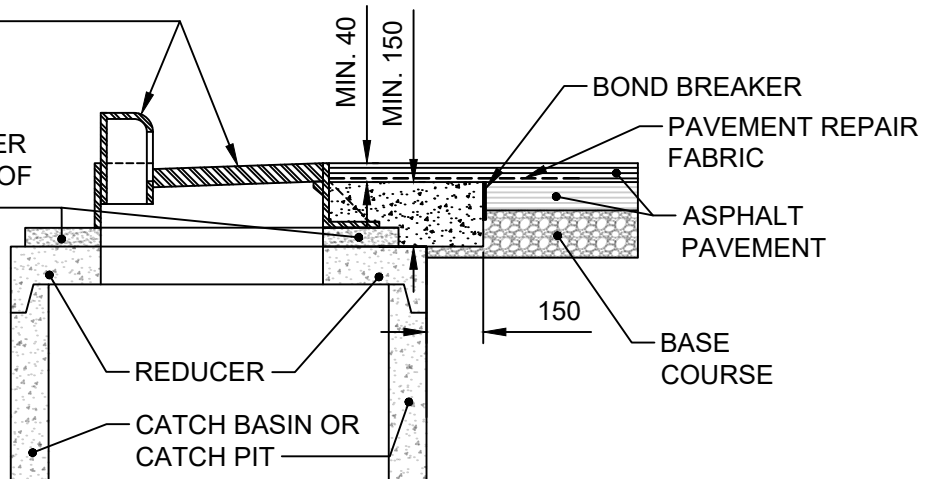


CURB AND GUTTER INLET FRAME AND COVER

CONCRETE RISER OR ONE LAYER OF BRICKS

NOTE:

CURB FOR ASPHALT PAVEMENTS SHALL BE CONSTRUCTED CONTINUOUSLY THROUGH ISOLATION. SAW CUT AND REMOVE CURB FOR ISOLATION.



SECTION A-A

DIMENSIONS IN MILLIMETRES



THE CITY OF WINNIPEG
PUBLIC WORKS DEPARTMENT

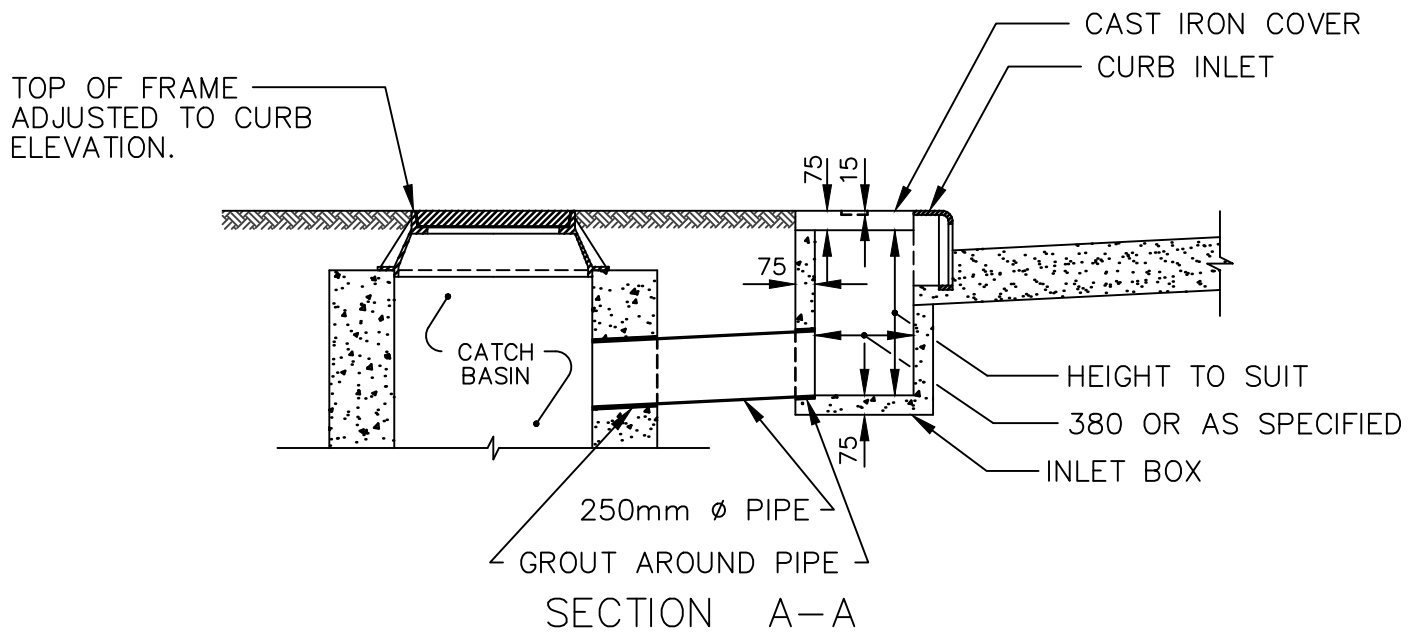
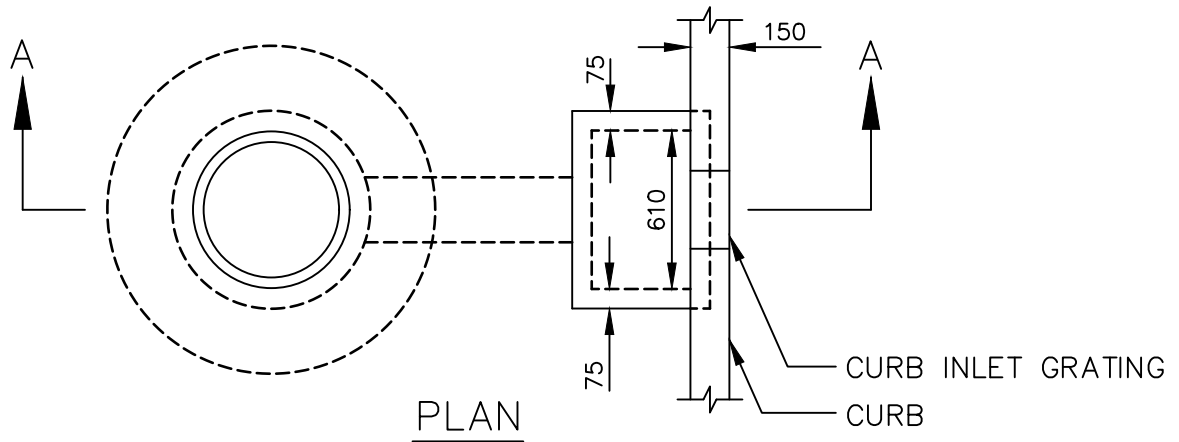
Reference Spec. No.
CW 3325

Revisions

No.	Date	Description	By
-----	------	-------------	----

Designed By: A.G.	Drawn By: T.K.	Scale : N.T.S.
Checked By: B.K.	Date: 2025-12-15	Drawing No. SD-220E
Approved: PAVEMENT MANAGEMENT BRANCH		

BARRIER CURB AND GUTTER INLET ISOLATION DETAIL FOR NEW ASPHALT PAVEMENTS



NOTE

- 1) IF INLET INTO CATCH BASIN DOES NOT EXIST, BREAK INTO THE WALL OF THE CATCH BASIN TO PROVIDE FOR INLET.
- 2) IF CATCH BASIN IS TOO CLOSE TO CURB TO INSTALL 250mm PIPE, RELOCATE CURB INLET ALONG CURB.

DIMENSIONS IN MILLIMETRES



THE CITY OF WINNIPEG
PUBLIC WORKS DEPARTMENT

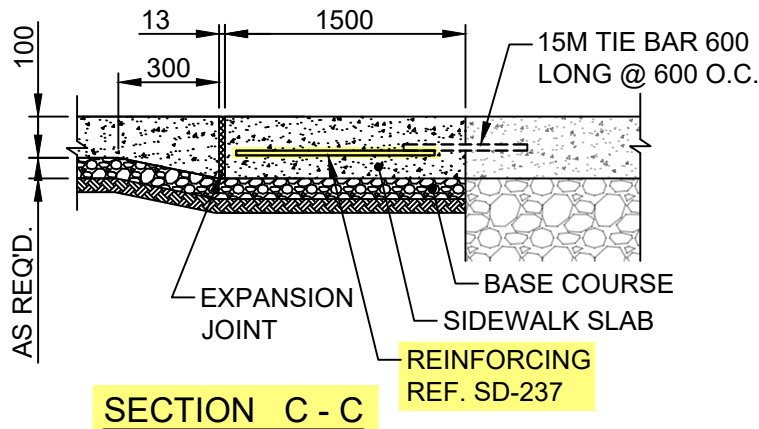
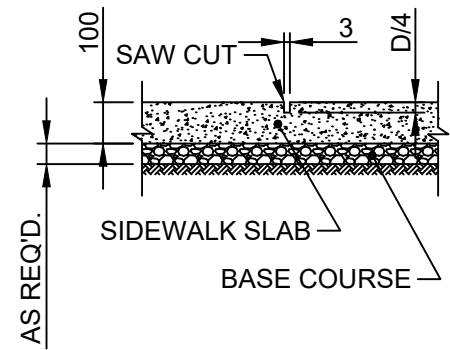
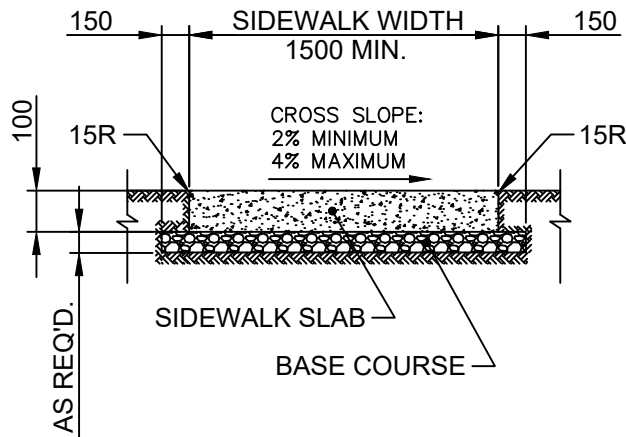
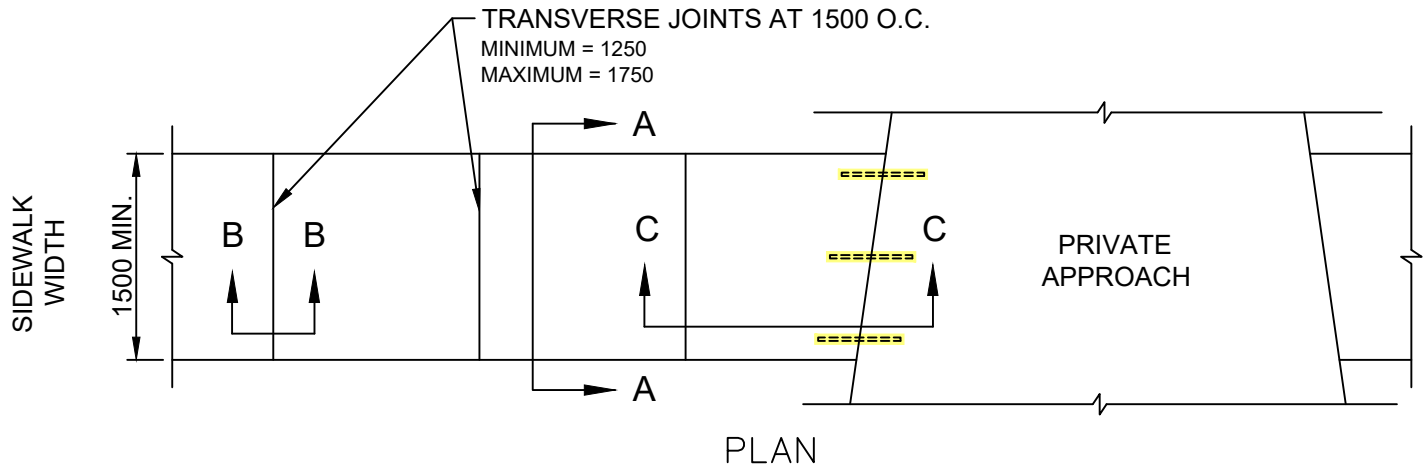
Reference Spec. No.
CW 3210

Revisions

1.	JAN 26	GENERAL REVISION	A.G.
No.	Date	Description	By

CURB INLET WITH
CATCH BASIN IN BOULEVARD

Designed By: L.S.W.L.	Drawn By: G.F.N.	Scale : N.T.S.
Checked By: L.S.W.L.	Date: 2025-12-15	Drawing No.
Approved: PAVEMENT MANAGEMENT BRANCH		SD-222



NOTE:

1. SIDEWALK SLAB SURFACE WILL BE GIVEN A TEXTURED BROOM FINISH. NO EDGER MARKS WILL BE LEFT
2. LONGITUDINAL JOINTS AT 1500 O.C. MAXIMUM
3. FOR PRIVATE APPROACHES WITH CURBS, CURB RAMPS SHALL BE INSTALLED

DIMENSIONS IN MILLIMETRES

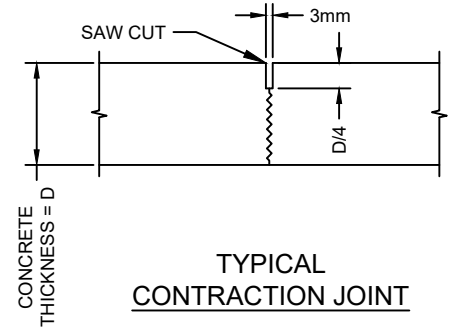
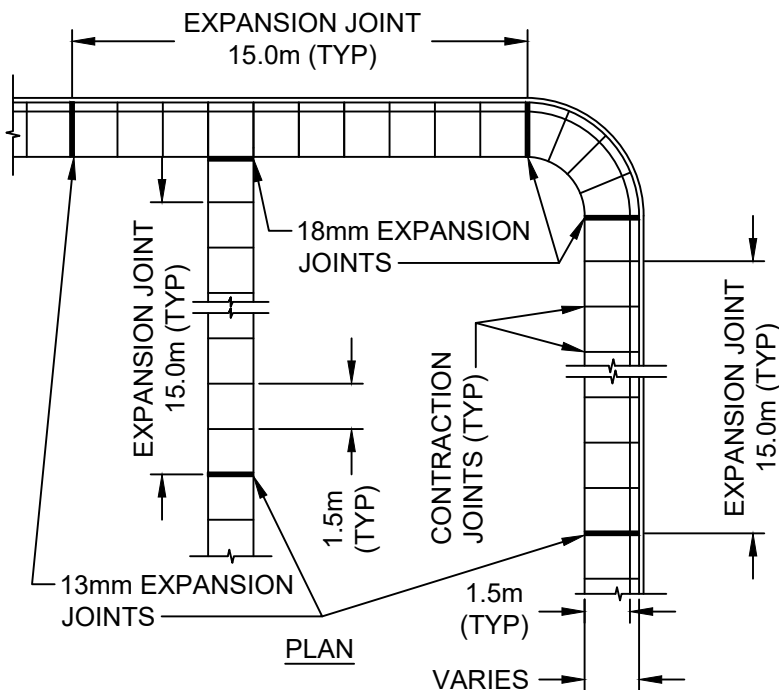
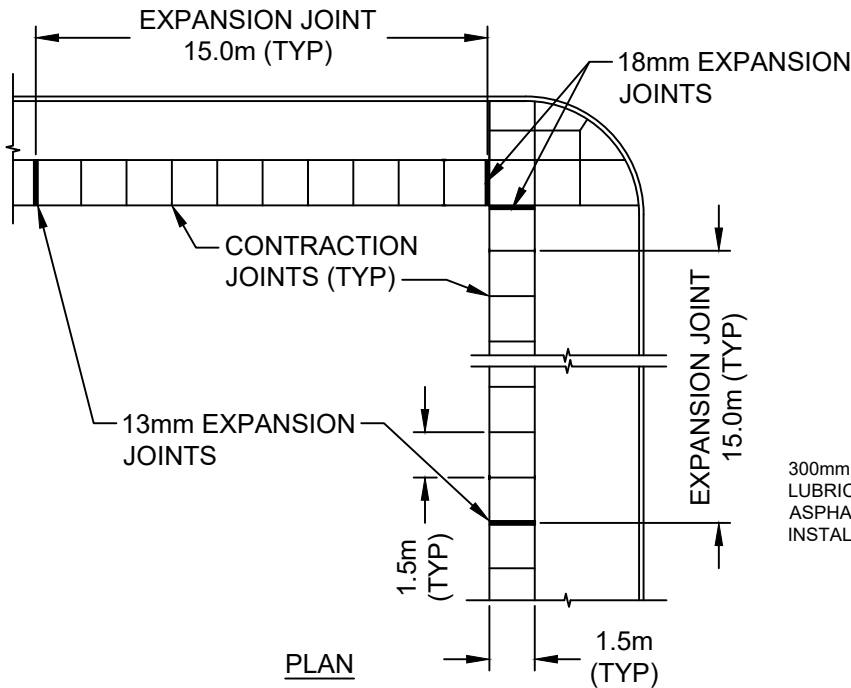


THE CITY OF WINNIPEG
PUBLIC WORKS DEPARTMENT

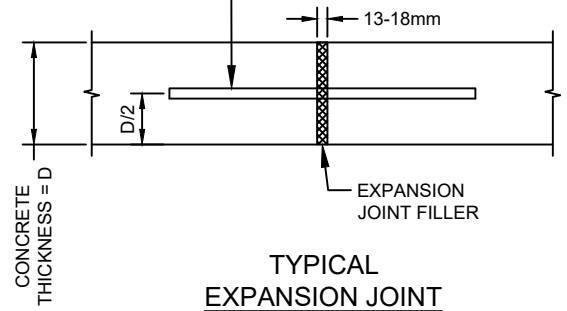
Reference Spec. No.
CW 3235, CW 3310, CW 3325

CONCRETE SIDEWALK

Revisions			
1.	DEC 25	ADDED TIE BARS AND REINFORCING	T.K.
No.	Date	Description	By
Designed By:		Drawn By:	Scale :
A.G.		R.B.	N.T.S.
Checked By:		Date:	Drawing No.
B.K.		2025-12-15	
Approved:			SD-228A
PAVEMENT MANAGEMENT BRANCH			



300mm LONG 10M DOWELS
LUBRICATED WITH
ASPHALTIC CUT-BACK,
INSTALLED 450mm O/C



NOTES:

1. IF SIDEWALK IS CONSTRUCTED DURING COLD WEATHER CONCRETING PERIOD, EXPANSION JOINTS SHALL BE INSTALLED EVERY 12.0m
2. EXPANSION JOINTS SHALL NOT BE INSTALLED WHEN CONSTRUCTING MONOLITHIC CURB AND SIDEWALK
3. EXPANSION JOINTS SHALL BE INSTALLED WHEN INSTALLING SEPARATE CONCRETE SPLASH STRIP
4. WHEN REPLACING HEAVED PANELS IN AN EXISTING SIDEWALK, EXPANSION JOINTS SHALL BE INSTALLED ON BOTH ENDS OF THE REPLACED PANELS
5. DOWELS SHALL BE DRILLED AND EXPANSION JOINT FILLER INSTALLED WHEN TYING INTO EXISTING SIDEWALK



THE CITY OF WINNIPEG
PUBLIC WORKS DEPARTMENT

Reference Spec. No.
CW 3325

SIDEWALK EXPANSION JOINTS

Revisions

No.	Date	Description	By
-----	------	-------------	----

Designed By:
A.G.

Drawn By:
R.B.

Scale :
N.T.S.


Checked By:
B.K.

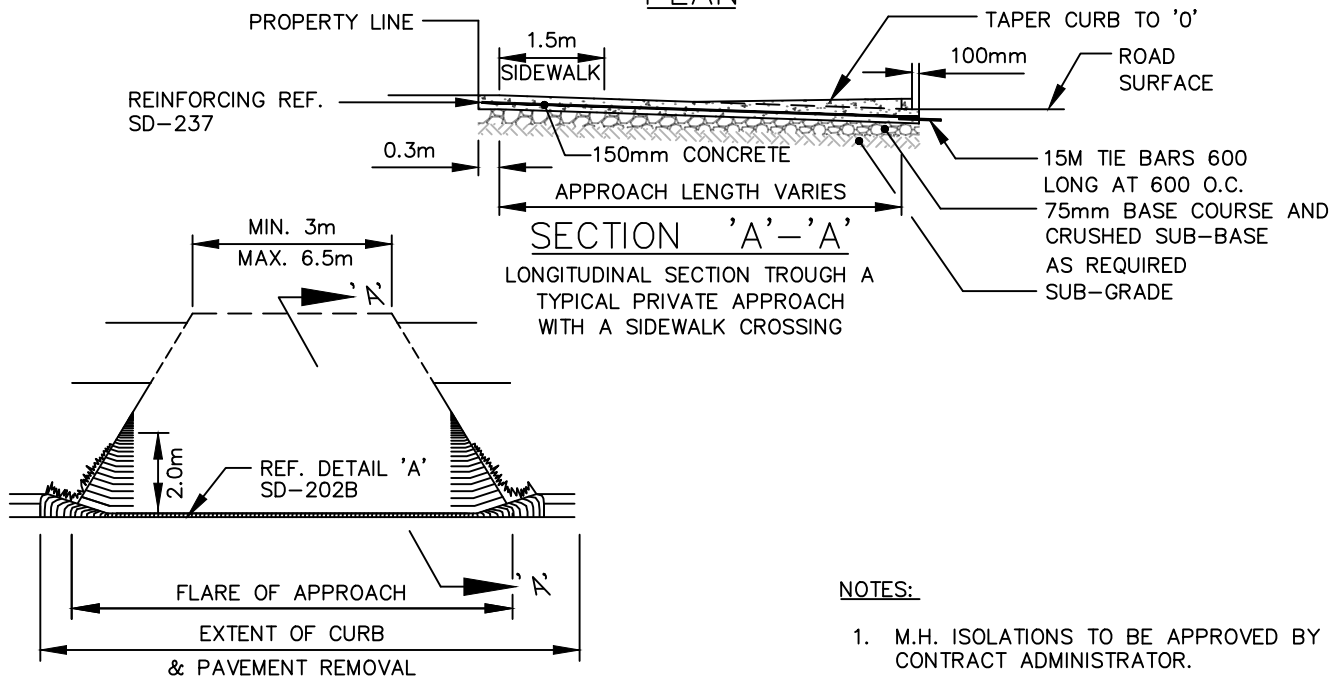
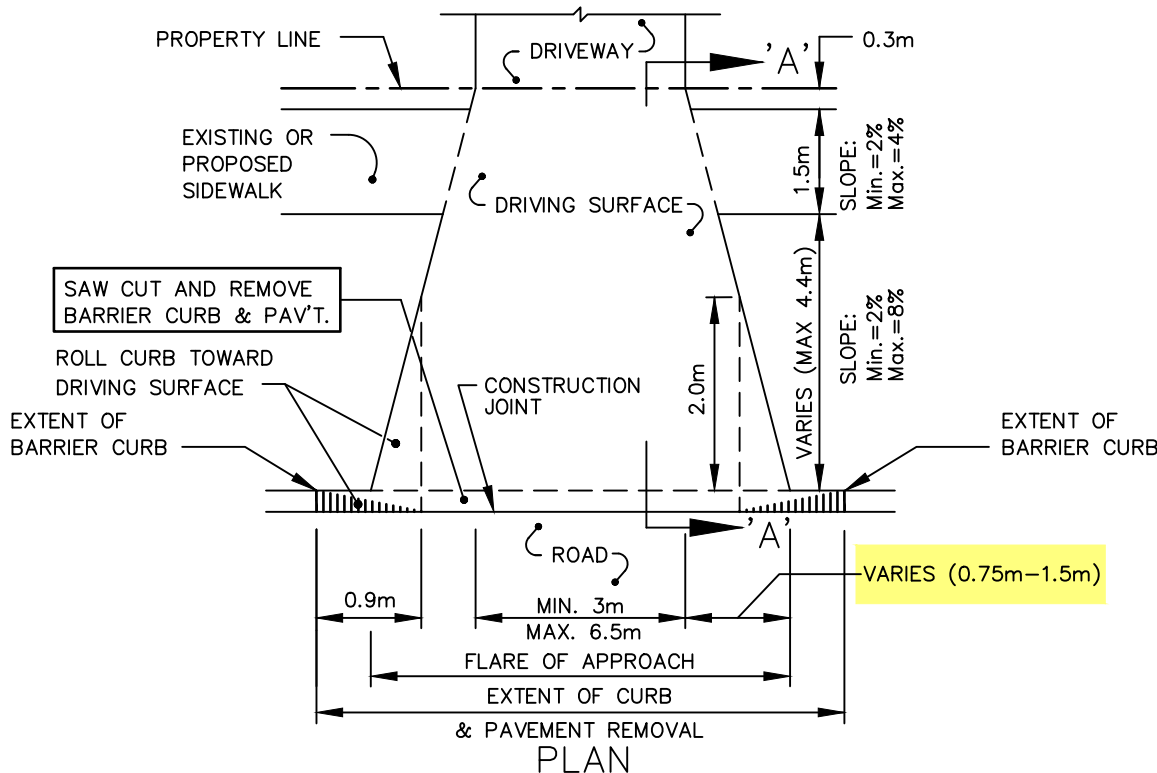
Date:
2025-12-15

Drawing No.

Approved:
PAVEMENT MANAGEMENT BRANCH

SD-228D

 <div> <div>THE CITY OF WINNIPEG</div> <div>PUBLIC WORKS DEPARTMENT</div> </div>	Revisions			
Reference Spec. No. CW 3325	No.	Date	Description	By
CURB RAMP FOR ASPHALT PAVEMENT	Designed By: A.G.		Drawn By: T.K.	Scale : N.T.S
	Checked By: B.K.		Date: 2025-12-15	Drawing No.
	Approved: PAVEMENT MANAGEMENT BRANCH			SD-229F



FRONTAL PERSPECTIVE OF FINISHED PRIVATE APPROACH

NOTES:

1. M.H. ISOLATIONS TO BE APPROVED BY CONTRACT ADMINISTRATOR.
2. CONTRACTION JOINT AS REQUIRED TO MATCH STREET TRANSVERSE JOINTS.



THE CITY OF WINNIPEG
PUBLIC WORKS DEPARTMENT

Reference Spec. No.
CW 3230, CW 3240, CW 3310

RESIDENTIAL APPROACH—CONCRETE
(WITH EXISTING BARRIER CURB)

Revisions

1.	DEC 25	CHANGED FLARE TO A RANGE	A.G.
No.	Date	Description	By

Designed By:
B.P.

Drawn By:
T.G.A.

Scale :
N.T.S.

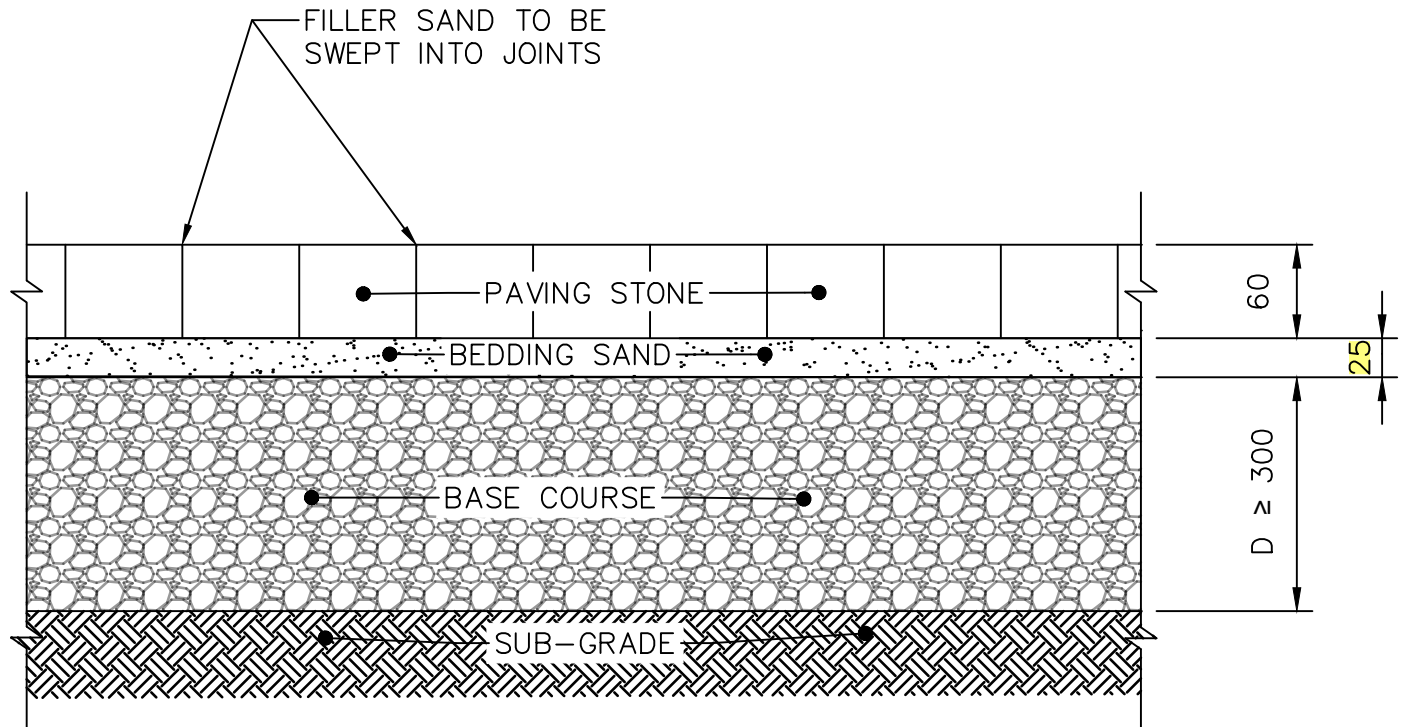
Checked By:
B.P.

Date:
2025-12-15

Drawing No.

Approved:
PAVEMENT MANAGEMENT BRANCH

SD-235



DIMENSIONS IN MILLIMETRES



THE CITY OF WINNIPEG
PUBLIC WORKS DEPARTMENT

Reference Spec. No.
CW 3110, CW 3330

INTERLOCKING PAVING STONE DETAIL
FOR RESIDENTIAL APPROACHES

Revisions

No.	Date	Description	By
1.	DEC 25	GENERAL REVISION	R.B.

Designed By:
A.G.

Drawn By:
R.B.

Scale :
N.T.S.

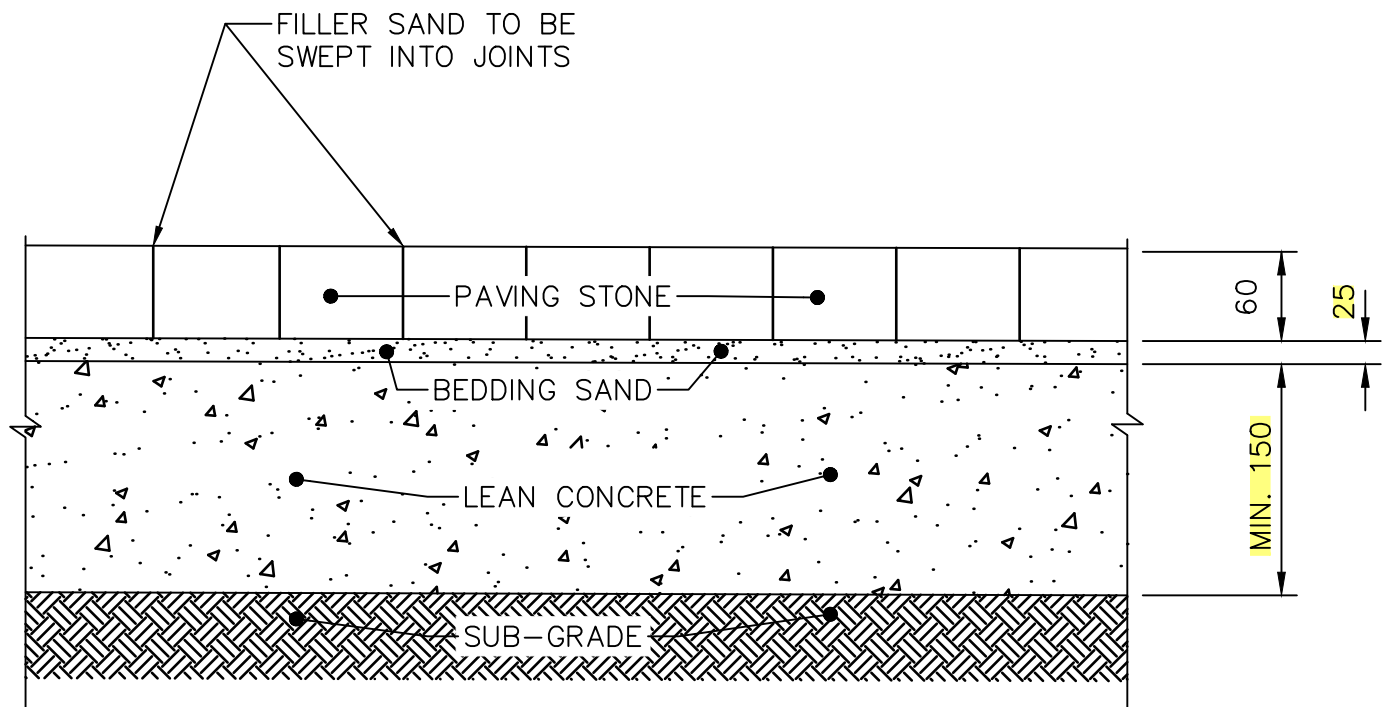
Checked By:
B.K.

Date:
2025-12-15

Drawing No.

Approved:
PAVEMENT MANAGEMENT BRANCH

SD-240A



DIMENSIONS IN MILLIMETRES



THE CITY OF WINNIPEG
PUBLIC WORKS DEPARTMENT

Reference Spec. No.
CW 3110, CW 3335

Revisions

No.	Date	Description	By
1.	DEC 25	GENERAL REVISION	A.G.

INTERLOCKING PAVING STONES
ON LEAN CONCRETE BASE
(NON DRIVING SURFACE)

Designed By:
Z.V.K.

Drawn By:
R.B.

Scale :
N.T.S.

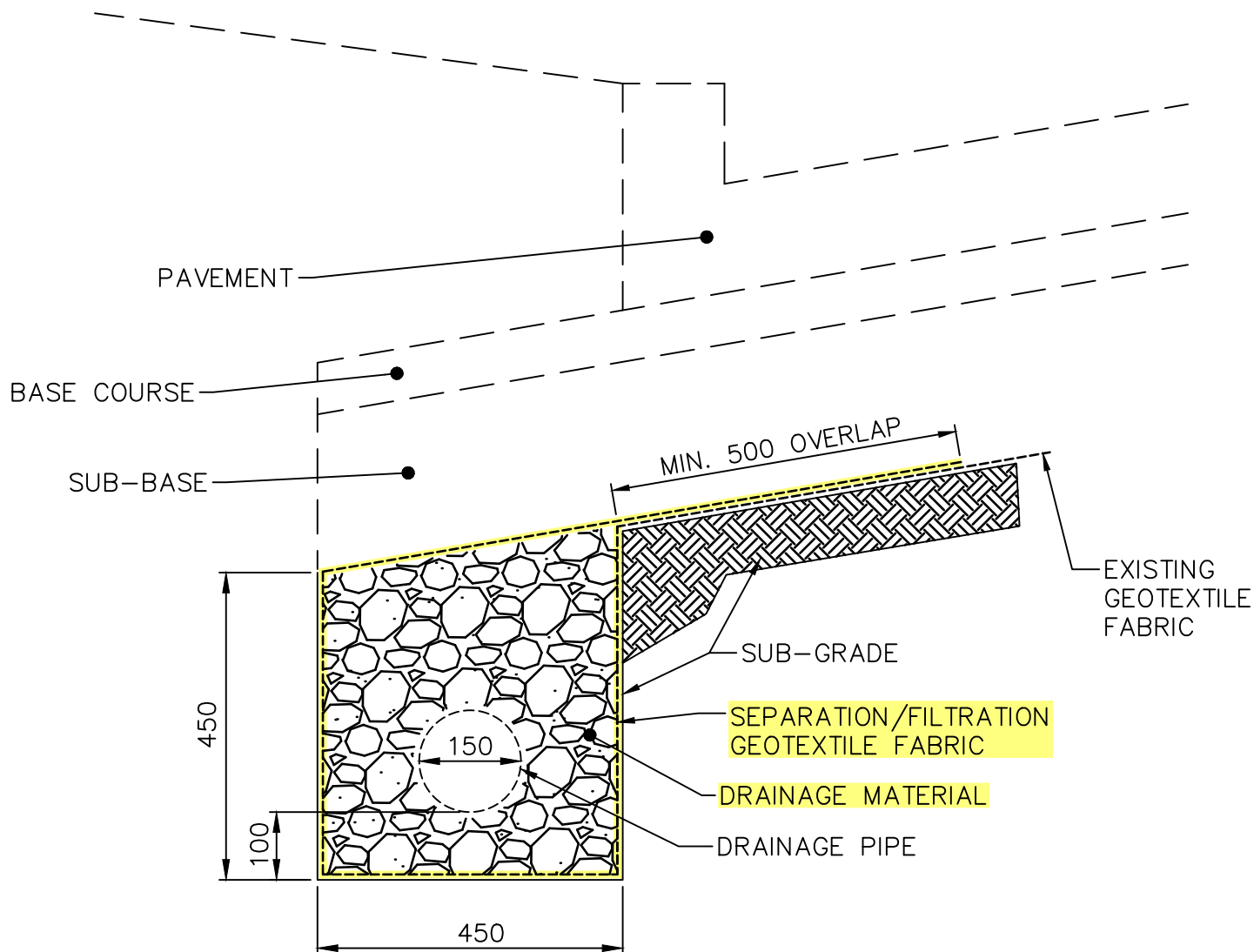
Checked By:
L.S.W.L.

Date:
2025-12-15

Drawing No.

Approved:
PAVEMENT MANAGEMENT BRANCH

SD-240B



DIMENSIONS IN MILLIMETERS



THE CITY OF WINNIPEG
PUBLIC WORKS DEPARTMENT

Reference Spec. No.
CW 3110, CW 3120, CW 3130

**SUBDRAIN INSTALLATION
DETAIL**

Revisions

No.	Date	Description	By
1.	DEC 25	GENERAL REVISION	A.G.

Designed By:
B.P.

Drawn By:
R.B.

Scale :
N.T.S.

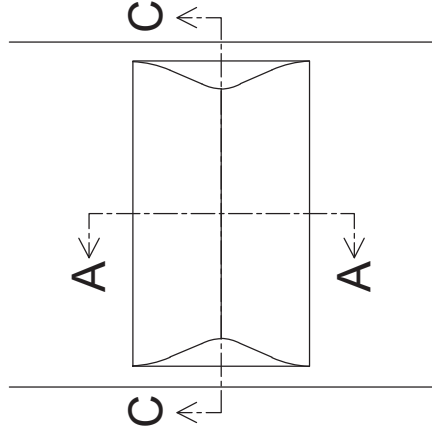
Checked By:
A.G.

Date:
2025-12-15

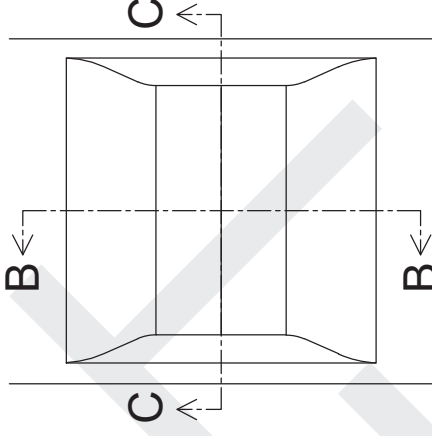
Drawing No.

Approved:
PAVEMENT MANAGEMENT BRANCH

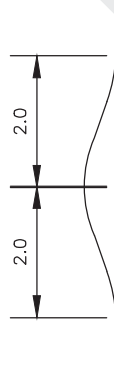
SD-245



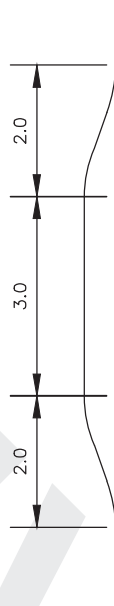
SPEED HUMP



SPEED TABLE



SECTION A-A



SECTION B-B



DRAFT



THE CITY OF WINNIPEG
PUBLIC WORKS DEPARTMENT
TRANSPORTATION DIVISION

**TYPICAL SPEED HUMPS
AND SPEED TABLES DETAILS**

DRAWN BY: GSP
DATE: 2020-07-30

SCALE: N.T.S.

APPROVED BY: _____

DATE _____

DRAWING NO. _____

SI-17